

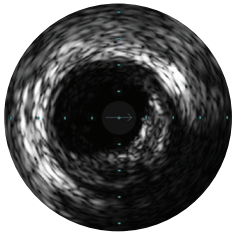
# PHILIPS

Core Integrated

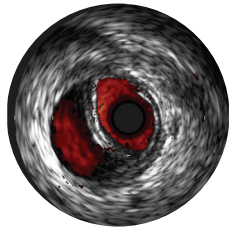
Precision guided therapy system

## IVUS and physiology on and ready at your fingertips

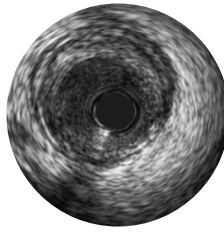
### One system, many choices



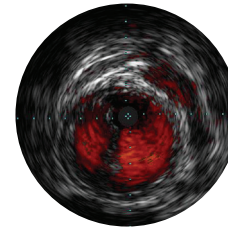
Digital IVUS imaging



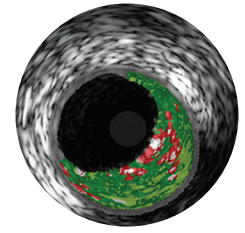
Peripheral imaging



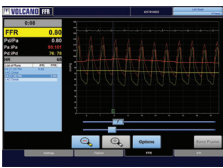
Rotational IVUS imaging



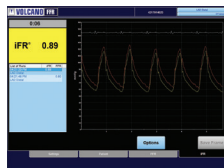
ChromaFlo imaging



VH IVUS imaging\*



FFR modality



iFR modality



iFR Scout modality

Streamlined workflow by importing and exporting patient data using DICOM Worklist. Document your results via DICOM Store, DVD or printout.

### Core control pad

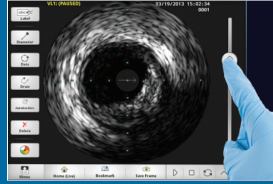
Easily controls both system and image from the sterile field for clarity in your approach, confidence in your decision, and convenience in your workflow.



# Workflow made easier from the sterile field



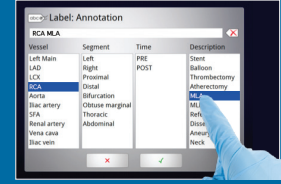
**Record**



**Review**



**Measure**



**Label**

FFR and iFR workflow also accessible.

## Specifications

<b>Power requirements</b>	System input	100, 120V, 220, 240VAC, 50/60Hz, 1000VA
	Workstation	100 – 240V, 50/60Hz, 825VA
	Monitor	100V – 240V 50/60Hz, 39W
<b>Dimensions</b>	Workstation	H=17", W=10", D=16.5"
	Control pad (optional)	H=2.75", W=10.5", D=8.3"
	Control room controller	H=5", W=15", D=10"
	Monitor	H=15"– 19" (depending upon the stand extension), W=15.8", D=9.7"
	Connection box	H=9.85", W=2.95", D=7.75"
<b>Processing and data storage</b>	Processor	1 CPU processor 2.53 GHz, 8 core total, 1366 MHz BUS
	Memory	8 GB SD RAM
	Hard drive capacity	1TB 7200 RPM SATA
	Digital archiving options	Local, DVD, DICOM network
	Dicom services supported	DICOM worklist management, DICOM store
<b>Ordering information</b>	Core system	CORE01, 400-0100.02
	Control pad (optional)	CPADO1
	Bedrail mount	MNT01
	Monitor mount	MNT02

For more information please contact your local Philips representative or visit [www.philips.com/IGTdevices](http://www.philips.com/IGTdevices)

\*The safety and effectiveness of VH IVUS for use in the characterization of vascular lesions and tissue types has not been established.