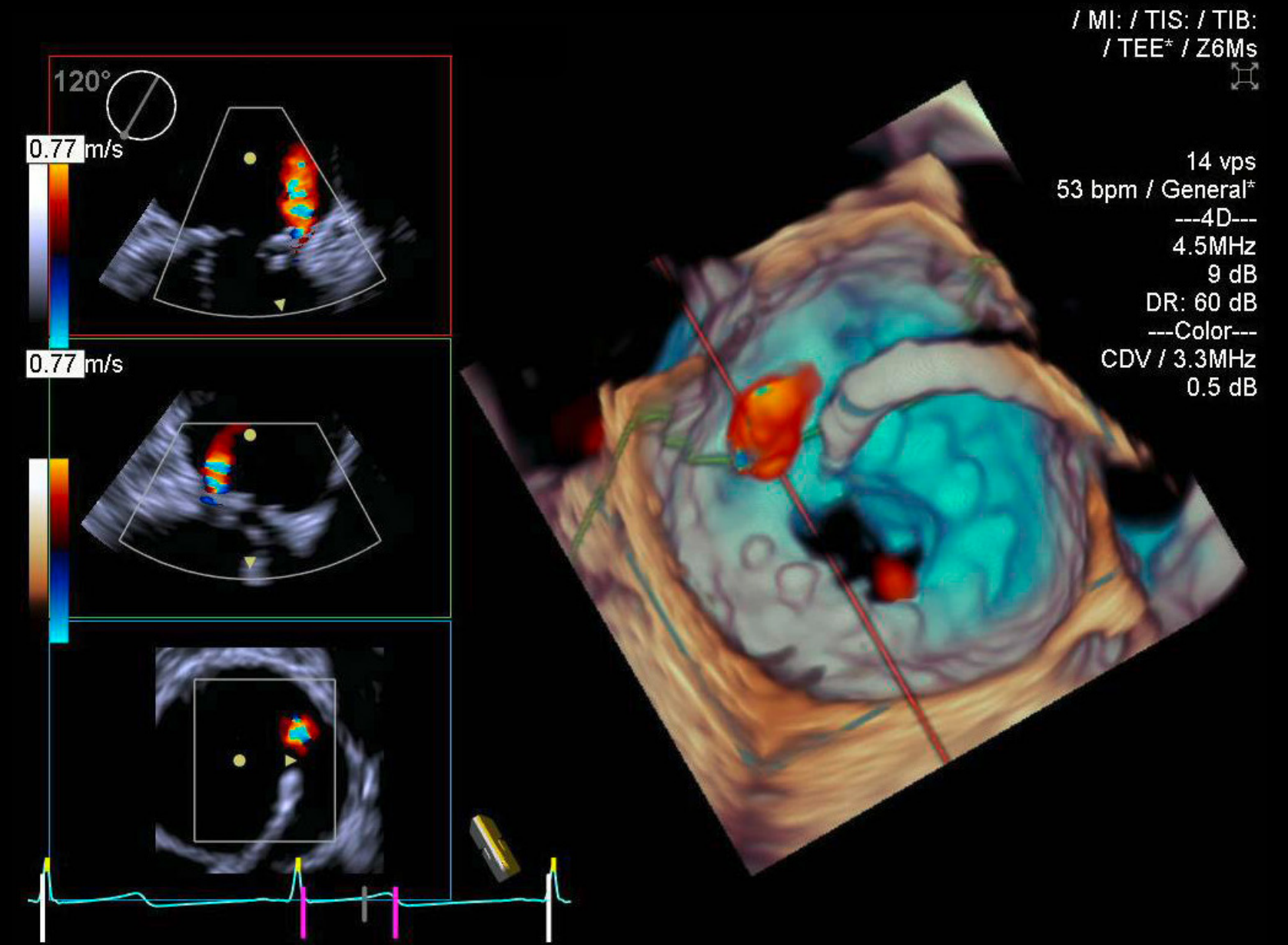
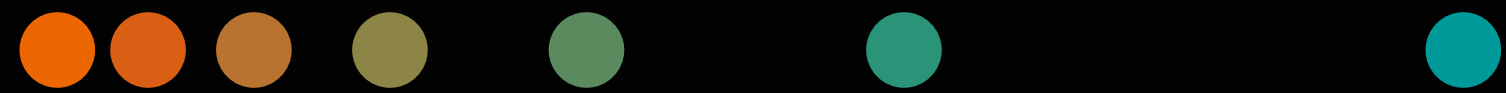


ACUSON SC2000 PRIME Ultrasound System

The complete Structural Heart Disease solution

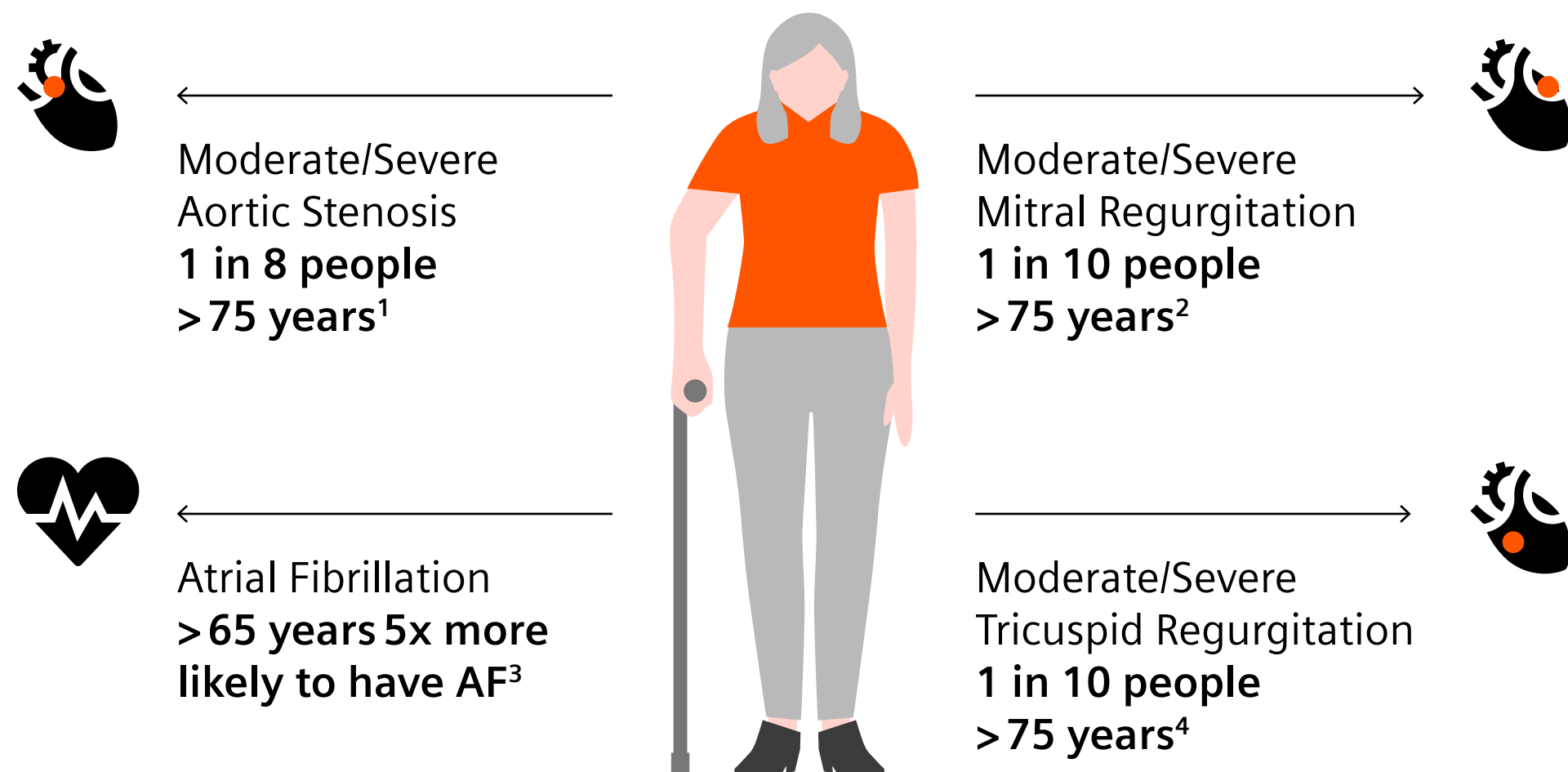
Release 6.0

siemens-healthineers.com/ultrasound



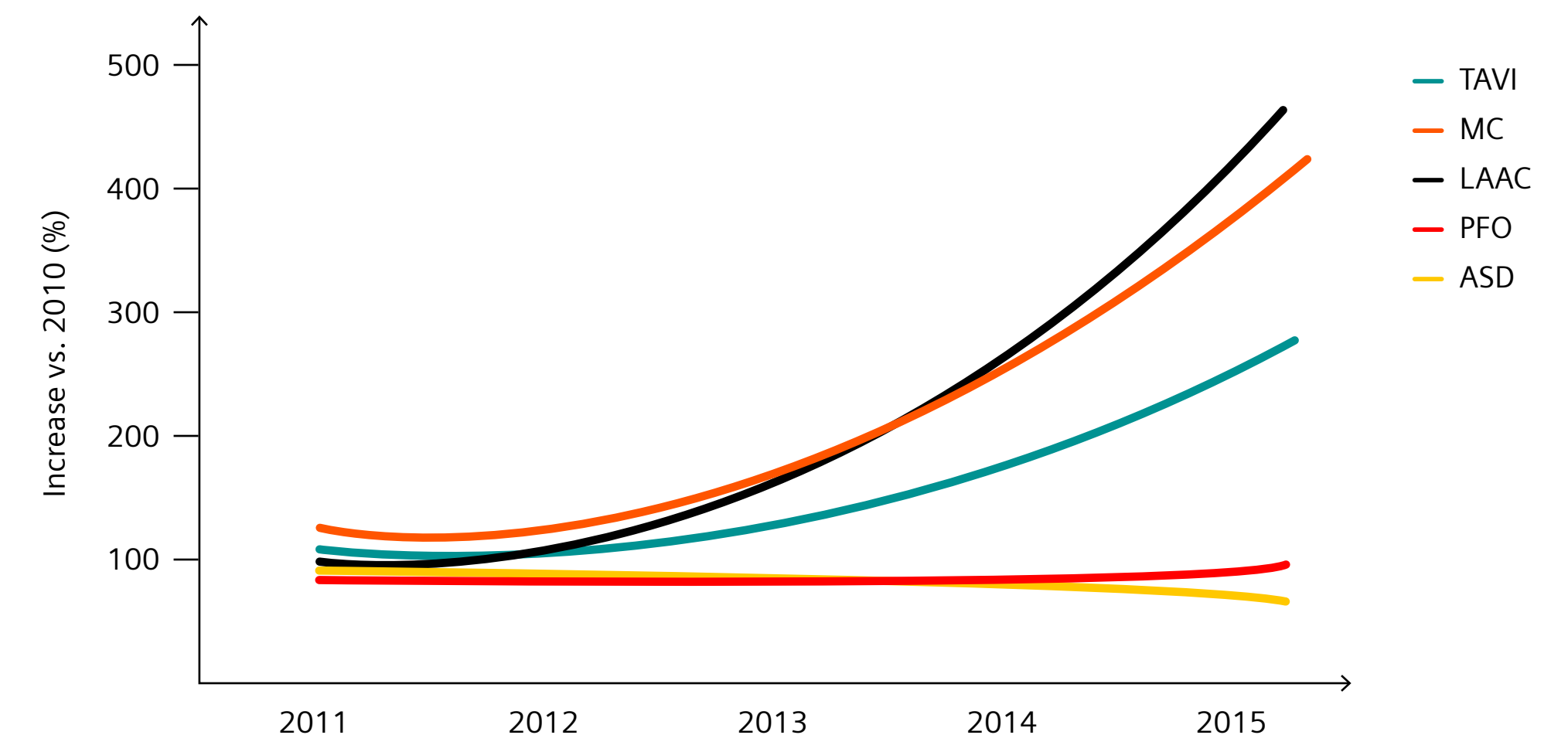
What if ...?

What if you had all the tools required to handle your SHD patients?



What if you could increase both speed and precision for your procedures?

Growth in SHD procedures⁵



**With the ACUSON SC2000 PRIME
ultrasound system you get the complete
Structural Heart Disease Solution.
The only system to offer 2D and 4D TTE,
TEE, ICE, and TrueFusion¹**



Transforming care delivery in Structural Heart Disease procedures

The ACUSON SC2000 PRIME Ultrasound System

ACUSON SC2000 PRIME is an ultrasound system that provides you **workflow efficiency** and **precision** required at every step of the care pathway. You get the complete Structural Heart Disease solution with the full suite of imaging options and 1-click AI-powered applications¹ – enabling you to handle whatever comes your way.



Power of the platform

Pioneering 2D and 4D imaging technologies for more clinically relevant detail in every image.



The complete Structural Heart Disease solution

The only system on the market to offer 2D and 4D TTE, TEE, ICE, and TrueFusion².



Precision and speed for the echo lab

The most comprehensive suite of AI-powered applications.



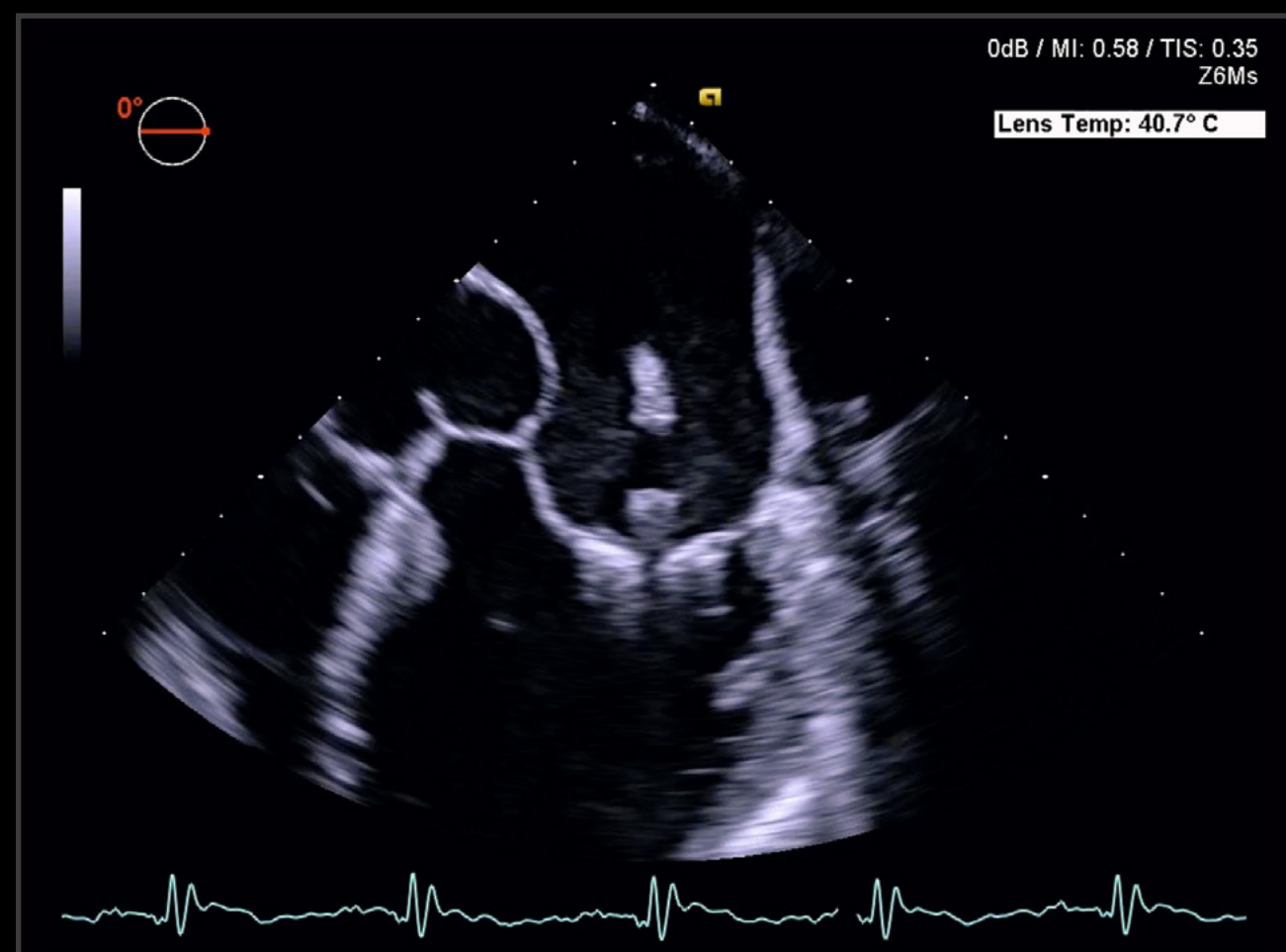
More relevant than ever before

Continuous improvements in image quality, IT and security, processing power, and ergonomics.

Pioneering 2D and 4D imaging technologies

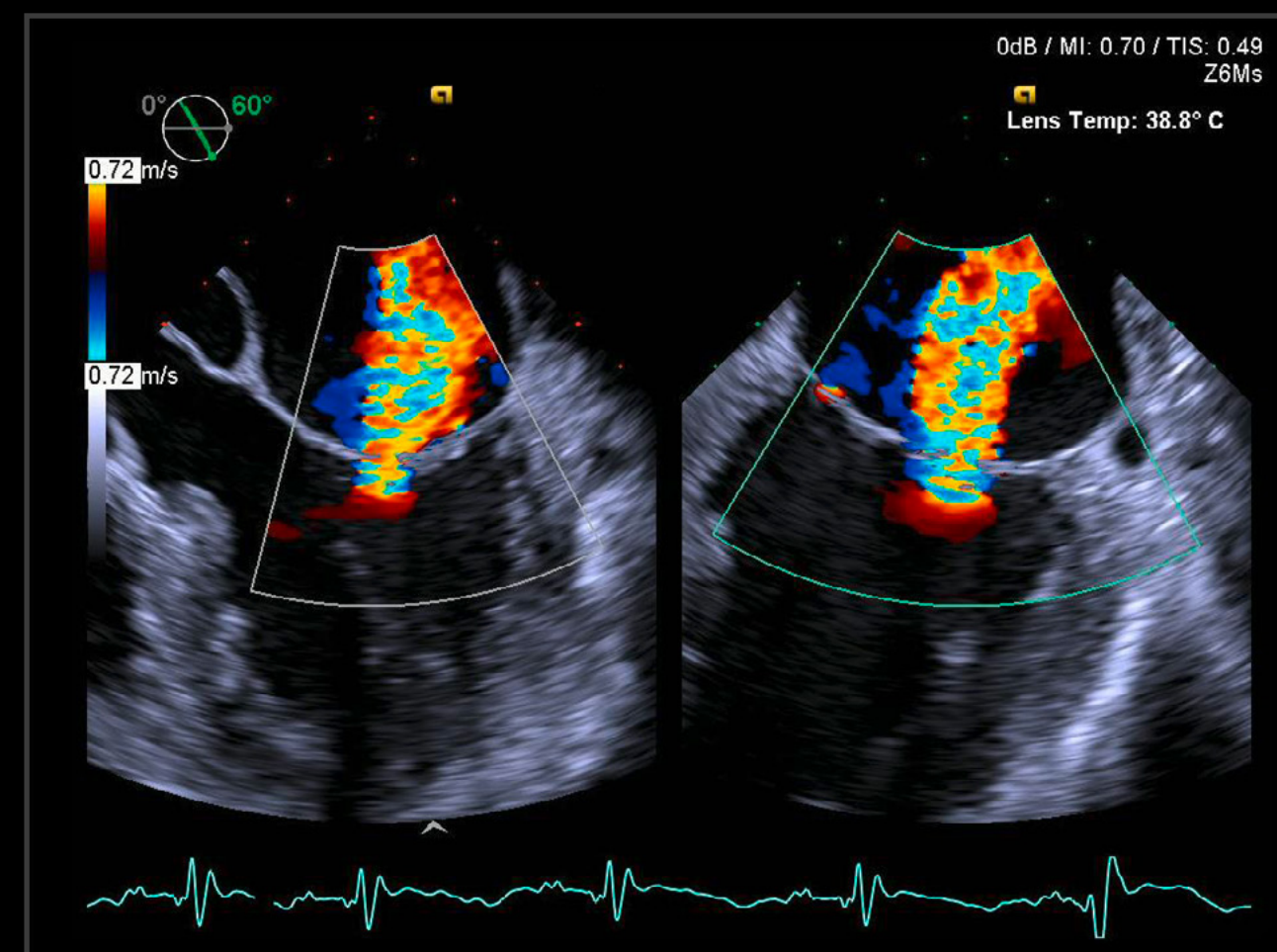
for more clinically relevant detail in every image

InFocus Coherent Technology



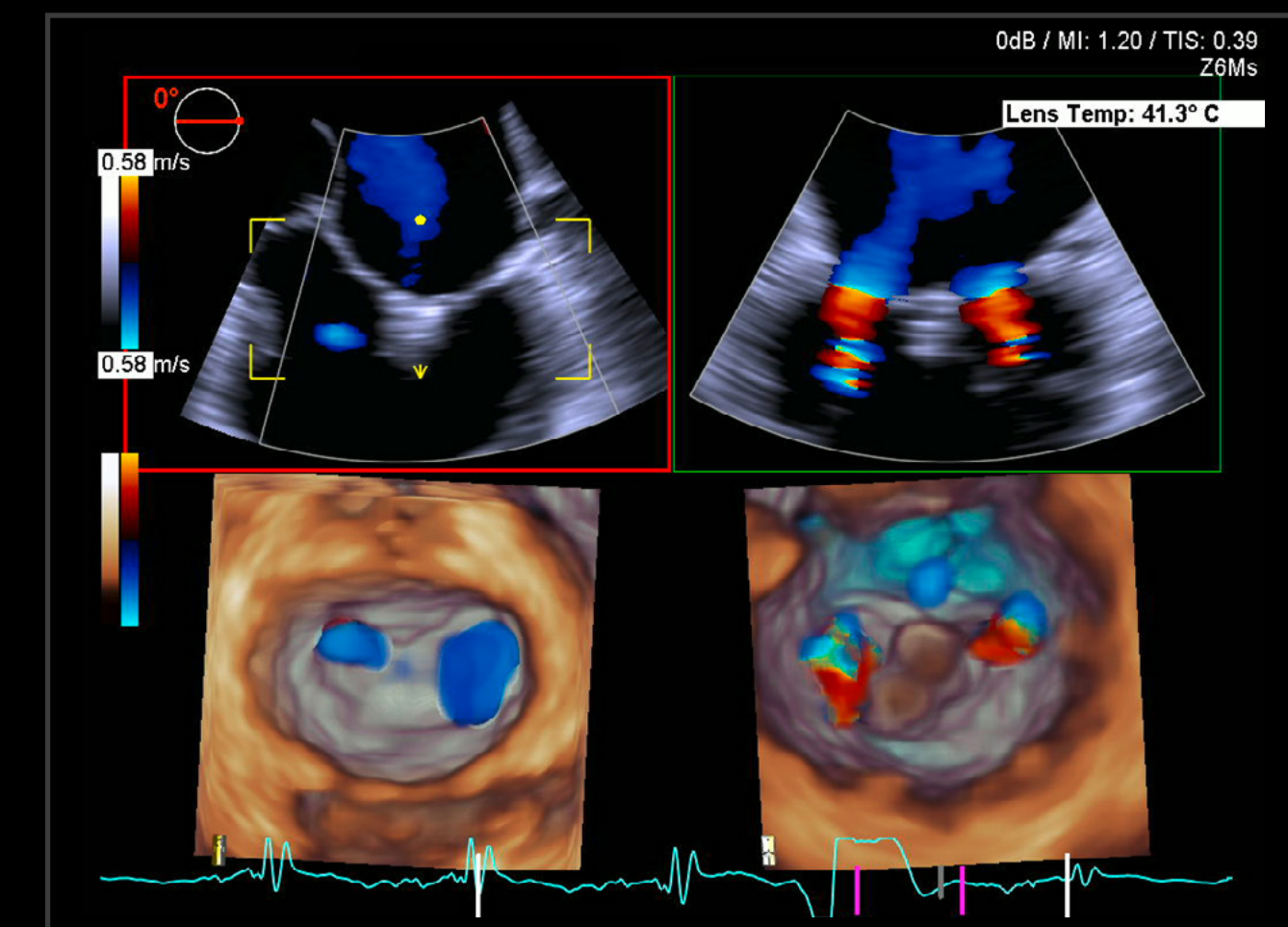
InFocus Coherent Technology synthesizes every pixel throughout the field of view for excellent spatial and temporal resolution.

True Fidelity Color Doppler



True Fidelity Color Doppler increases sensitivity and specificity while reducing color artifacts.

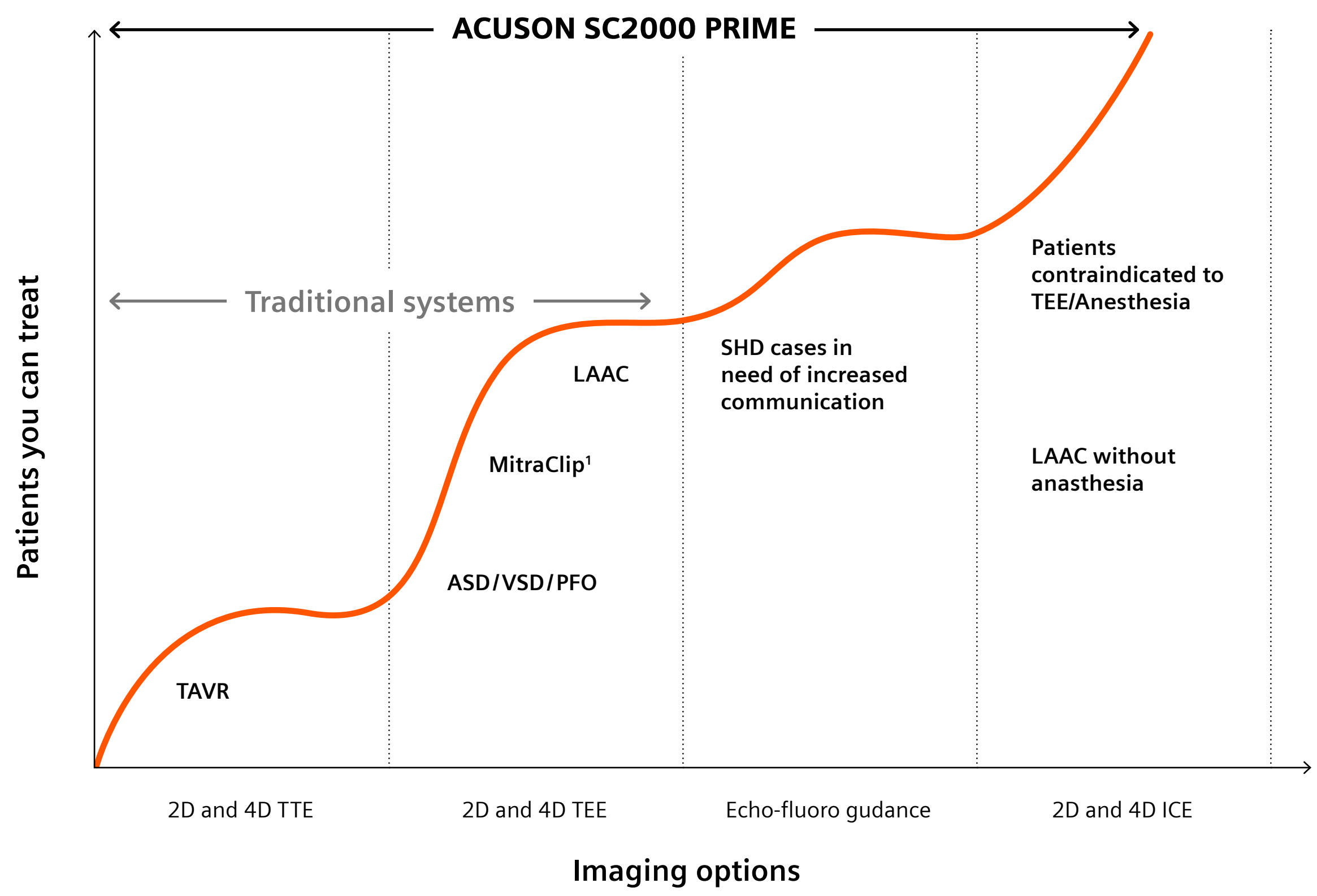
Real-Time Volume Color Doppler



Real-time 4D volume imaging and volume color Doppler is as easy and real-time as your 2D imaging. This enables you to move from static anatomic pictures to see anatomy in motion – true physiology.

Enabling you to handle whatever comes your way in SHD

Population over the age of 65 is expanding, causing an increase in the number and variety of patients at risk of arrhythmia and valvular heart disease. Be prepared to handle whatever comes your way in Structural Heart Disease with the full suite of imaging options available on the ACUSON SC2000 PRIME.



2D and 4D TTE, TEE, ICE, and TrueFusion

only with the ACUSON SC2000 PRIME Ultrasound System

2D TTE



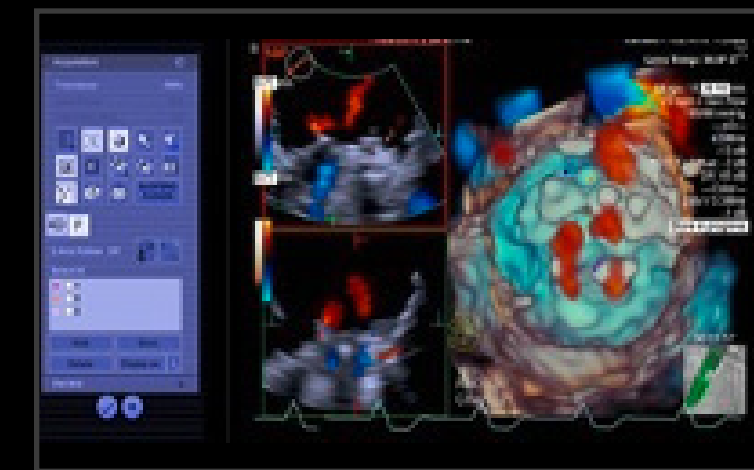
2D TEE



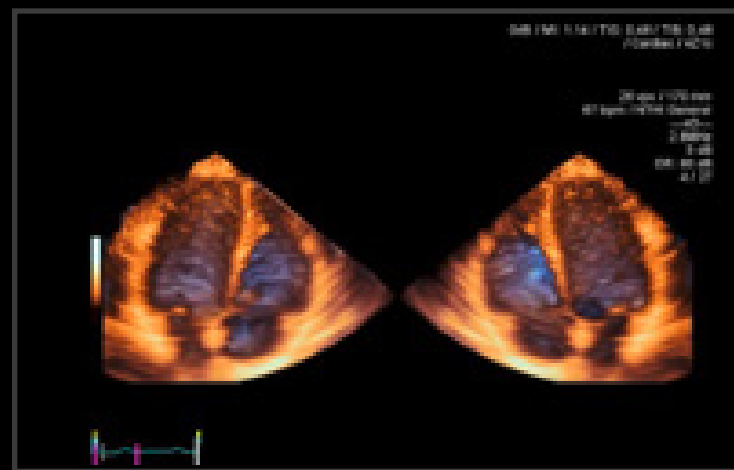
2D ICE



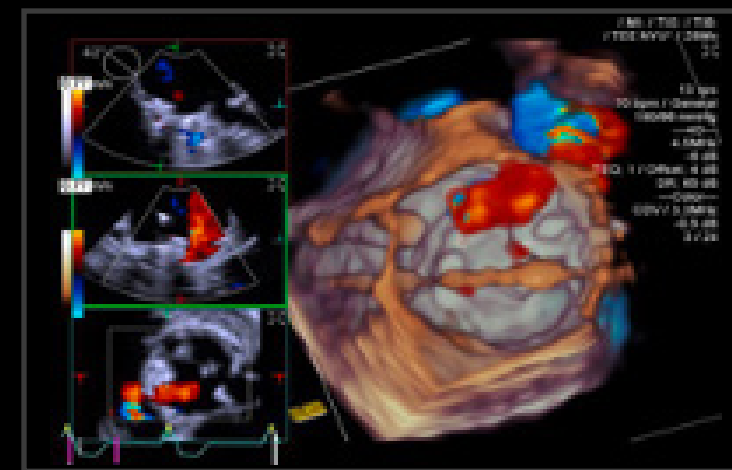
TrueFusion¹



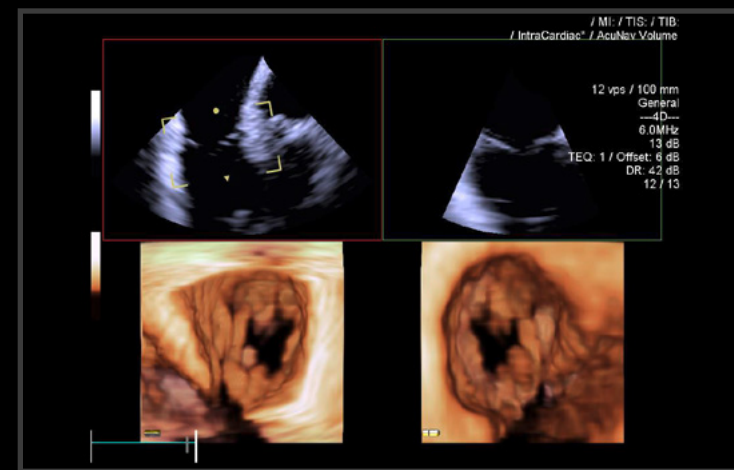
4D TTE



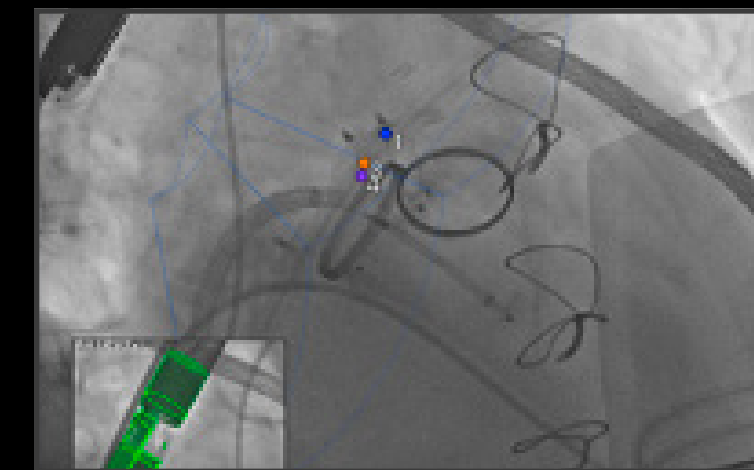
4D TEE



4D ICE



Echo-fluoro guidance

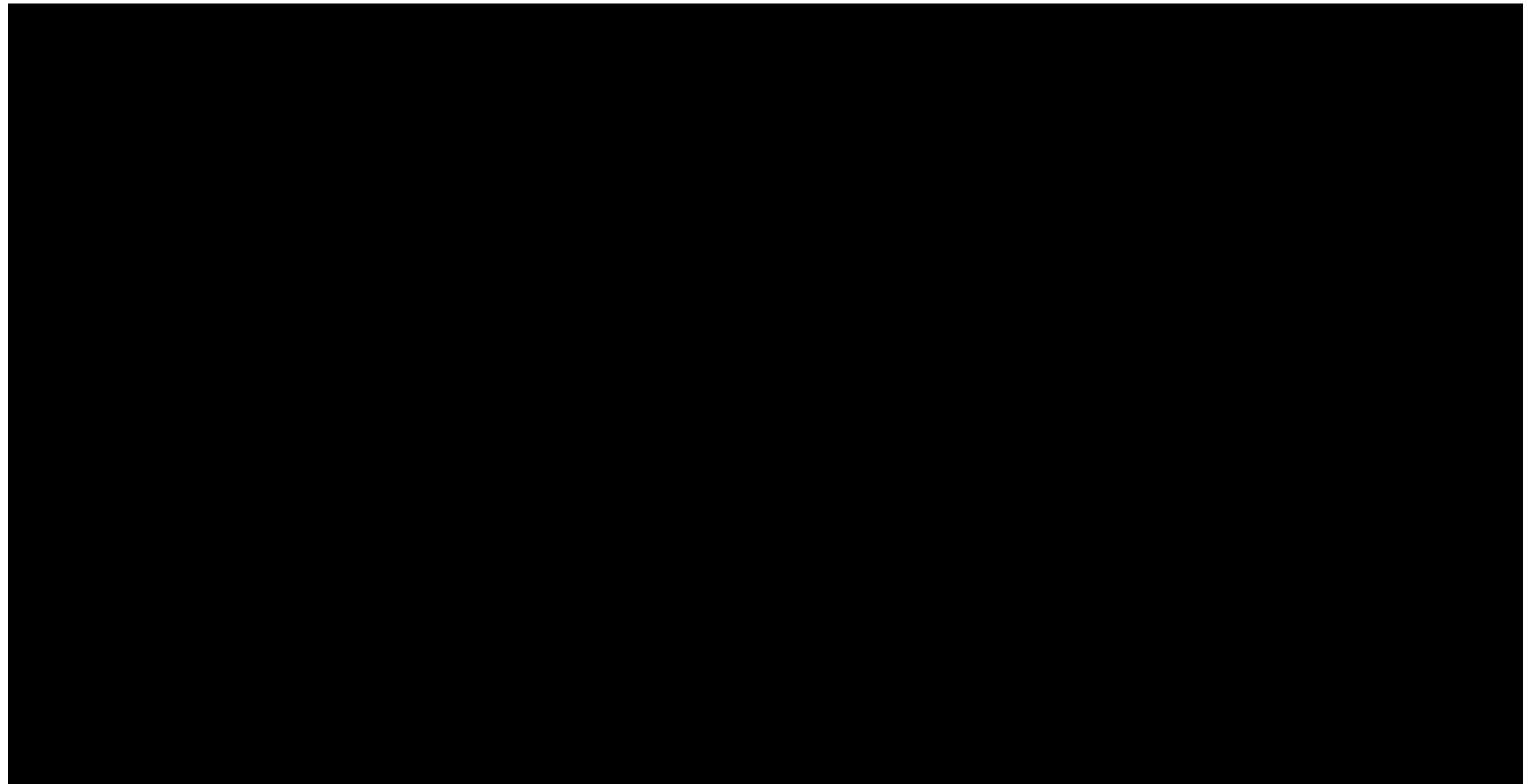


Leading in artificial intelligence and imaging

to bring you speed and precision in echocardiography

Siemens Healthineers has pioneered AI-Powered offerings since 1996. As of today, we have over 400 patents and applications in machine learning (with 100 in deep learning), and more than 30 AI-enriched offerings on the market.

Our first AI-powered application for echocardiography was released in 2009. Today, the ACUSON SC2000 PRIME ultrasound system offers the most comprehensive suite of AI-powered applications on the market.



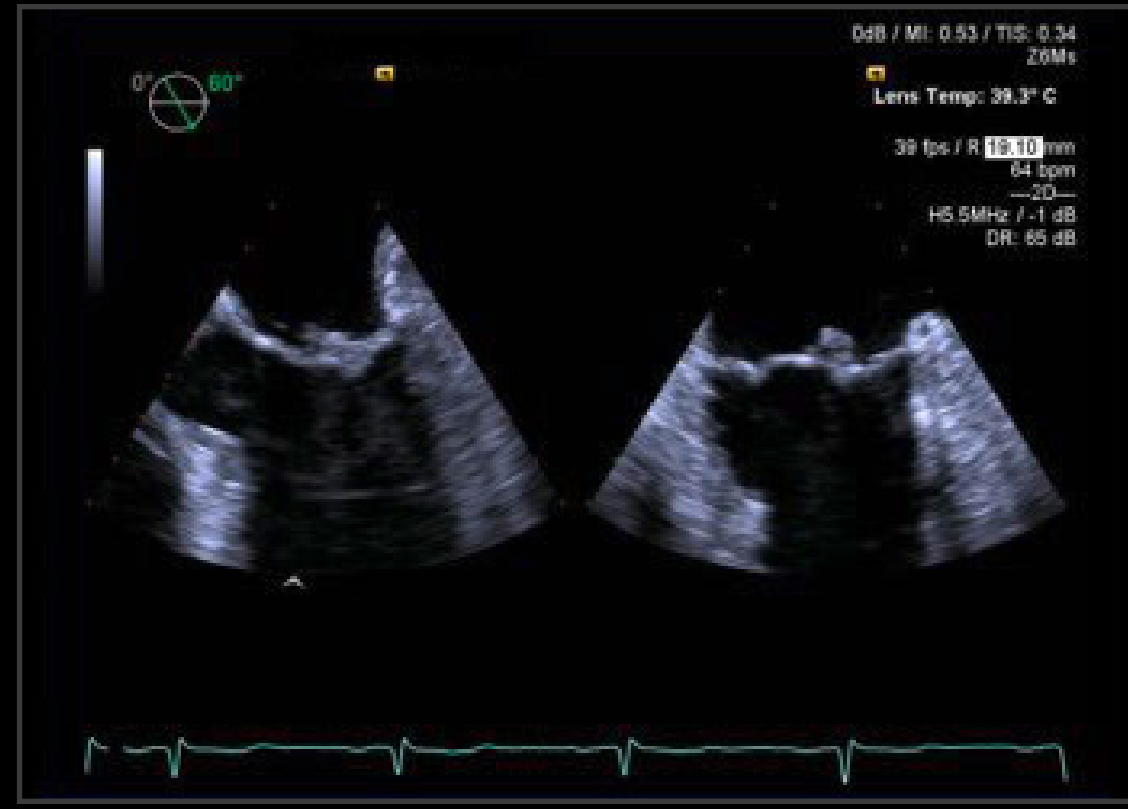
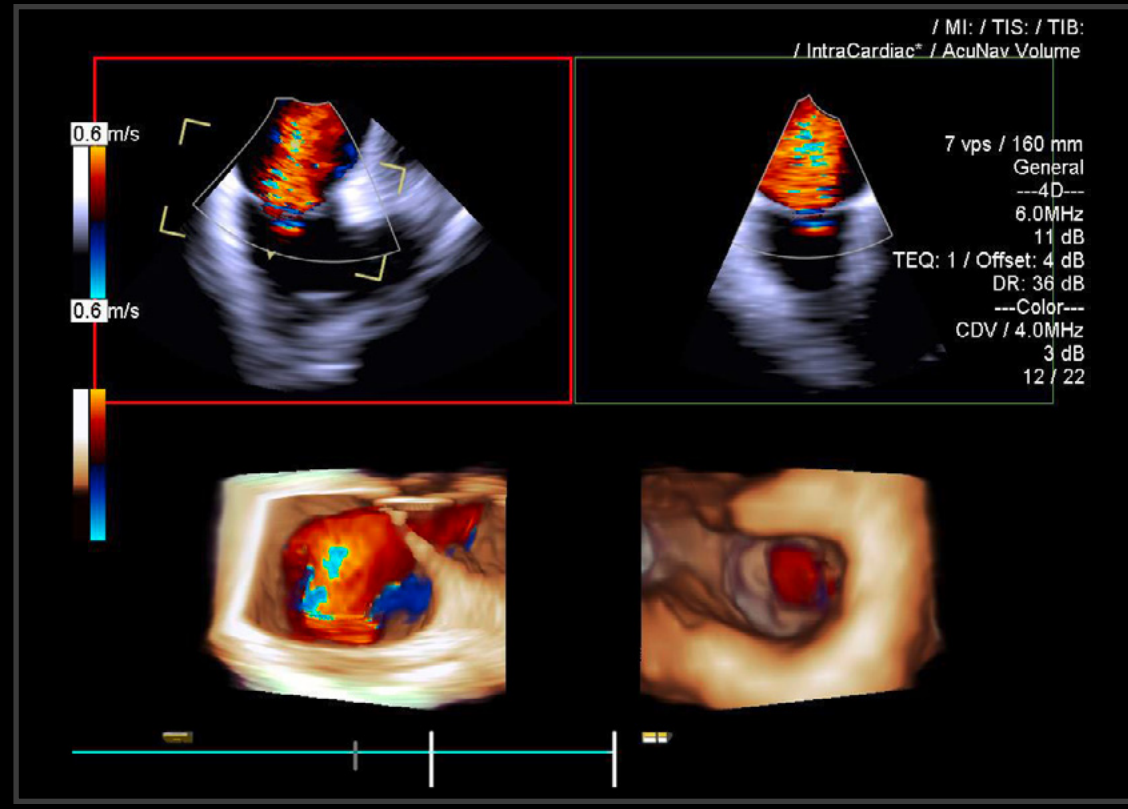
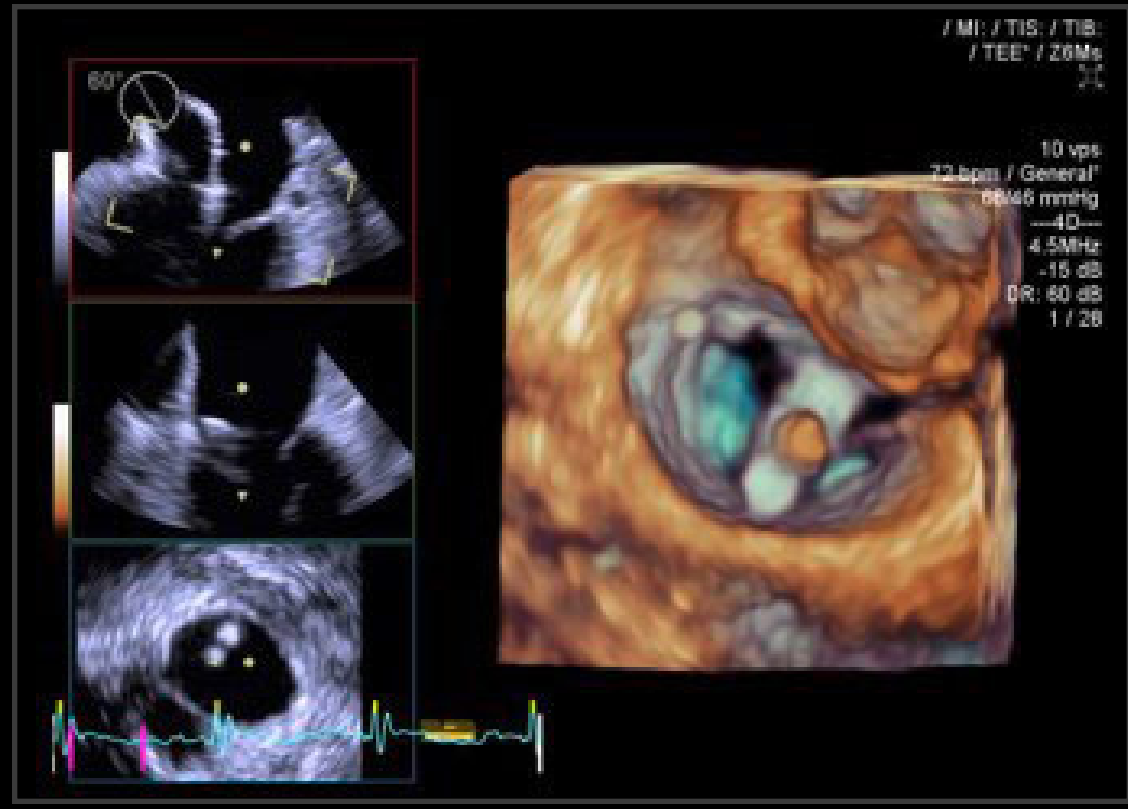
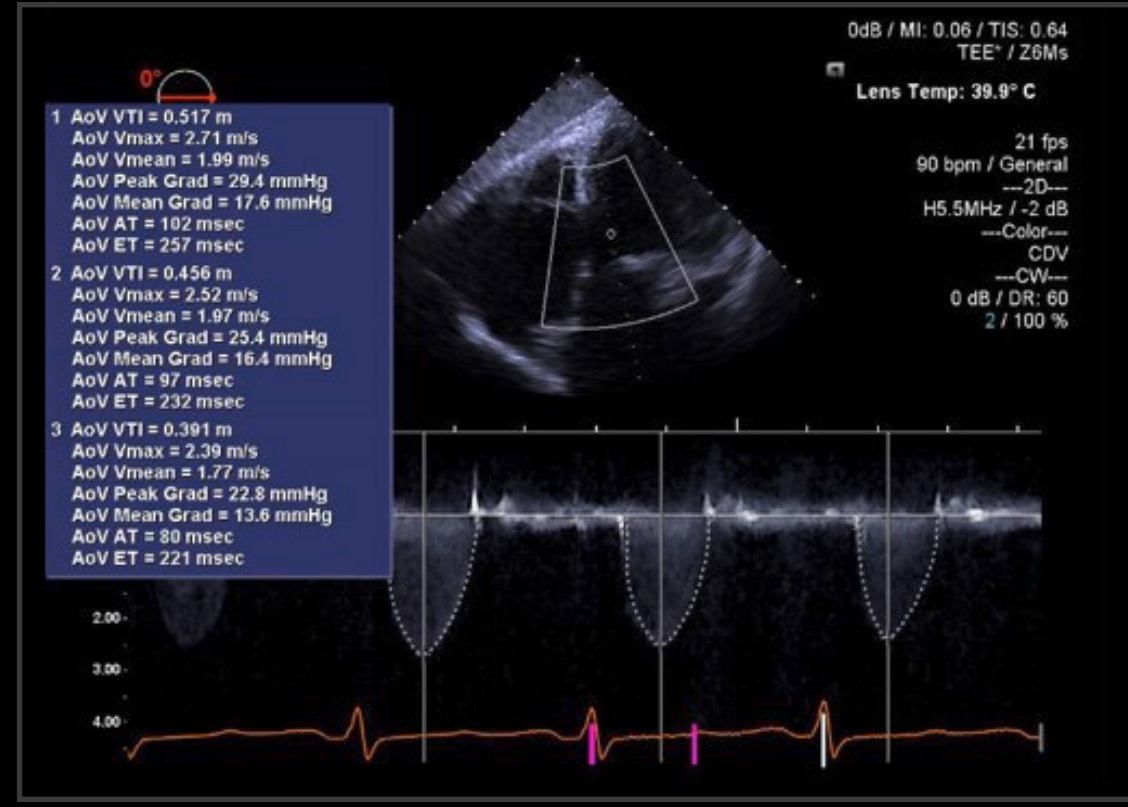
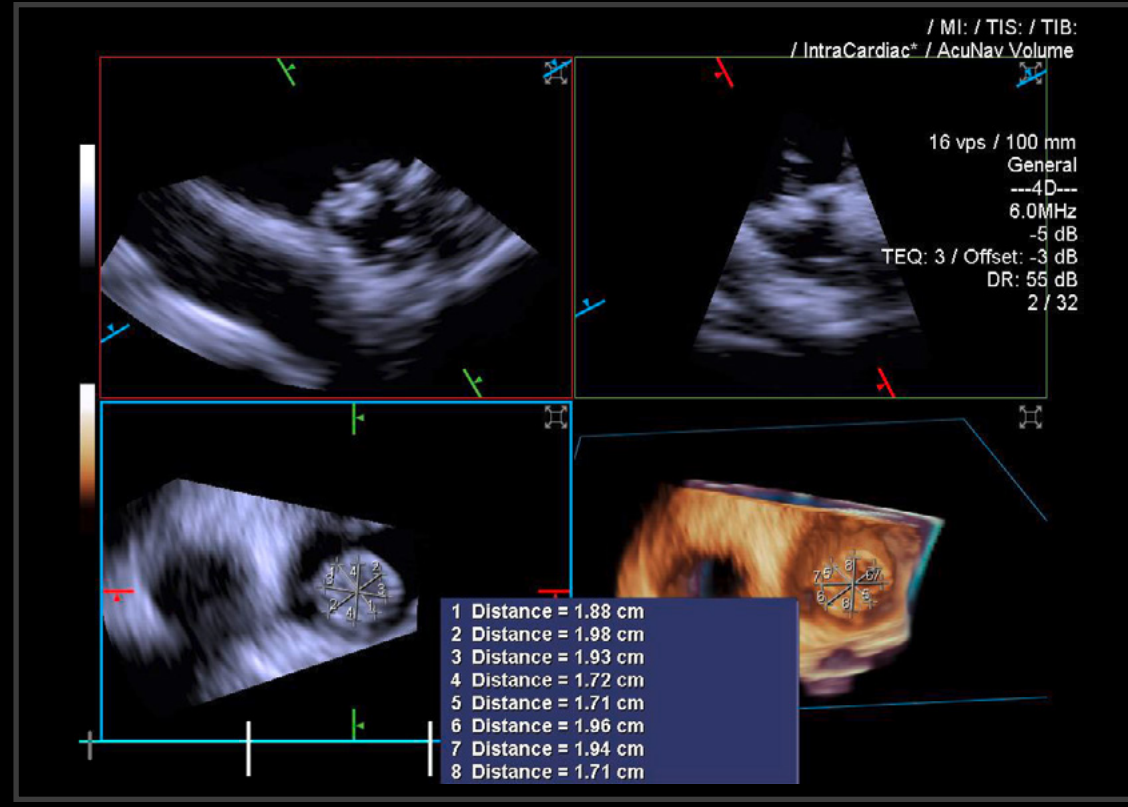
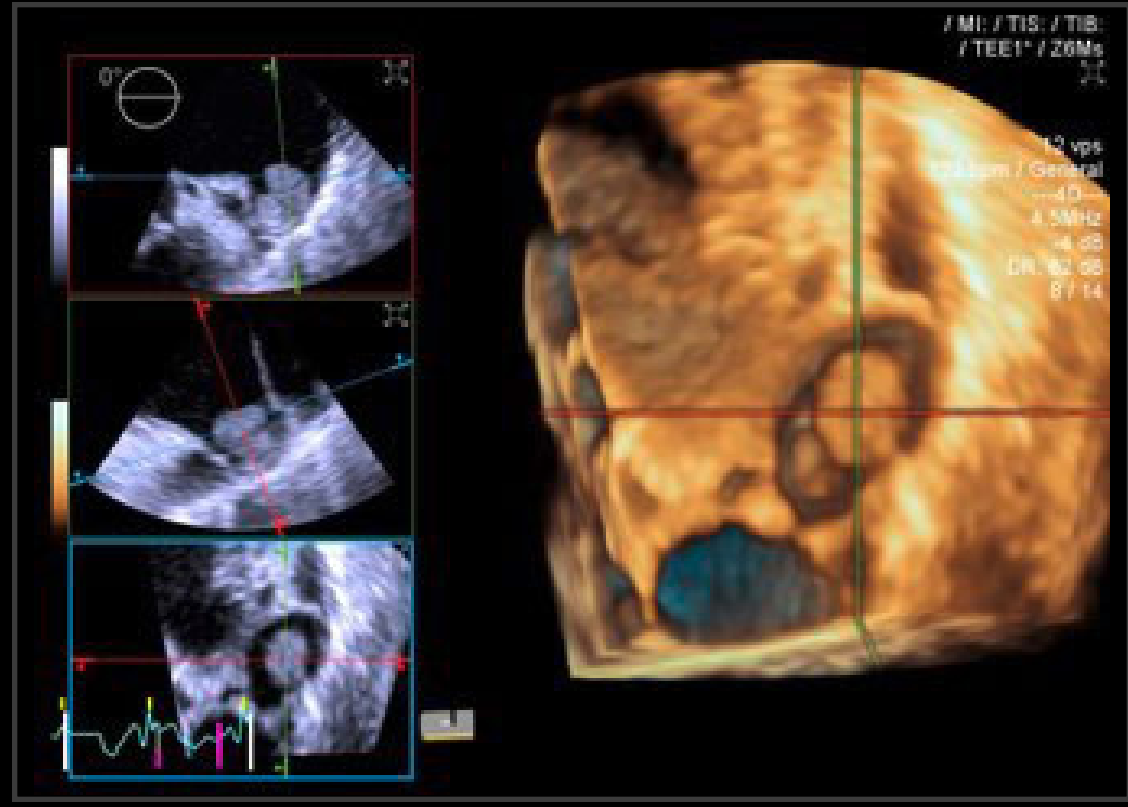
AI-powered clinical applications

Comprehensive overview

	Clinical application	Transthoracic (TTE)	Transesophageal (TEE)
Routine echo	eSie Measure workflow acceleration B-mode	✓	
	eSie Measure workflow acceleration M-mode	✓	
	eSie Measure workflow acceleration Spectral Doppler	✓	✓
	eSie Left Heart measurement package	✓	
	eSie LVA volume LV analysis	✓	✓
Valvular regurgitation	eSie PISA volume analysis	✓	✓
	eSie Valves advanced analysis package		✓
	eSie LVA volume LV analysis	✓	✓
Interventional guidance	TrueFusion ¹		✓
	eSie Measure workflow acceleration Spectral Doppler	✓	✓
	eSie LVA volume LV analysis	✓	✓
	eSie Valves advanced analysis package		✓
	eSie PISA volume analysis	✓	✓

Interventional imaging tools

available at the click of the button



Maximize system uptime with remote connected support

More relevant than ever before in the digital world

SRS (smart remote services) connects your medical equipment to our experts who provide you with proactive and interactive services caring for your running operations.



Remote Diagnosis & Repair

Immediate access to technical support
reducing labor costs by **> 50%¹**

Remote Assist

Real-time interaction with clinical application experts resulting in **faster incident resolution by > 80%¹**

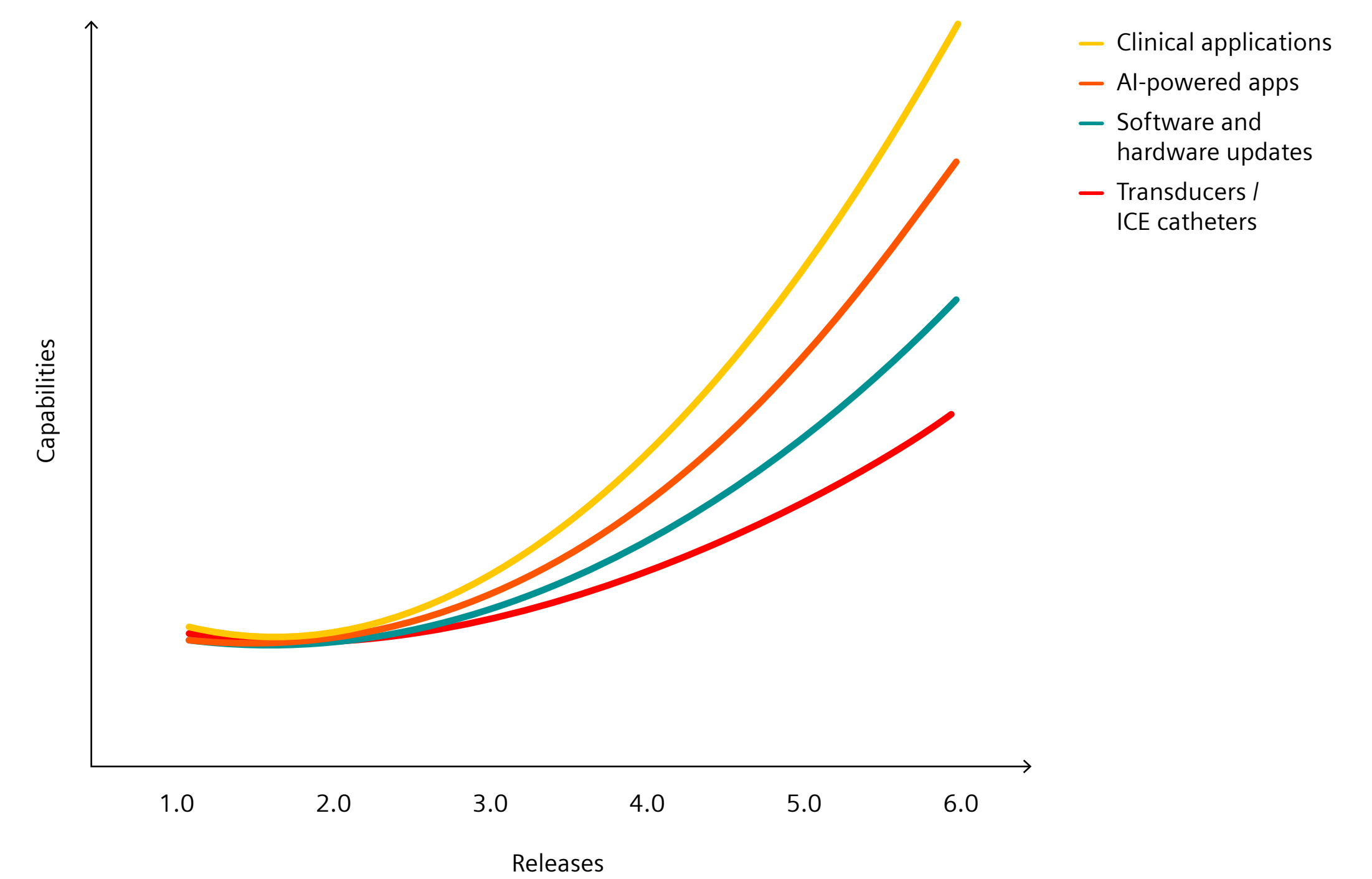
Remote software updates

Remote installation of the latest software updates to protect against cyber threats

More relevant today than ever before

The ACUSON SC2000 PRIME Ultrasound System today is completely different from just a few years ago

With ongoing investments in processing power and AI-powered applications as well as IT and security, the ACUSON SC2000 PRIME ultrasound system continues to revolutionize the world of echocardiography, transforming care delivery in Structural Heart Disease procedures.



"As an enthusiastic user of the ACUSON SC2000, I am very satisfied with the latest release. It provides improved image quality and efficiency that I require for diagnostic TTE and TEE exams and interventional guidance for SHD procedures.

The 2D and 4D Volume TTE and TEE imaging enable visualization of pathology and lesions that I might not be able to see otherwise.

AI-powered applications allow me to get what I need in 1-click, greatly reducing variability, time and effort required for diagnostic measurements as well as guidance of SHD procedures.

eSie Lines and eSie Slice allow me to dissect and navigate within the 3D dataset with more precision.

The greatest benefit for me are new Single V and Dual V tools. Now I can precisely view and crop my region of interest in critical periods during intervention."



Dr. Nicolas Merke
Head of Echo Lab
Sana Klinikum Lichtenberg,
Berlin-Brandenburg

The products/features mentioned in this document may not be commercially available in all countries. Due to regulatory reasons their future availability cannot be guaranteed. Please contact your local Siemens Healthineers organization for further details. Standalone clinical images may have been cropped to better visualize pathology.

ACUSON SC2000, AcuNav, True Fidelity, TrueFusion, eSie Sync, eSie Measure, eSie PISA, eSie LVA, eSie Valves, eSie Left Heart, eSie Lines and eSie Slice are trademarks of Siemens Medical Solutions, USA, Inc.

TrueFusion represents a workflow consisting of the software applications *syngo*® TrueFusion and TrueFusion echo-fluoro guidance.

AI-powered measurement tools consist of software applications leveraging machine learning-based Artificial Intelligence to achieve the intended outcome and include the eSie Measure workflow acceleration package, eSie Left Heart measurement package, eSie LVA volume LV analysis, eSie Valves advanced analysis package, eSie PISA and eSie Sync volume synchronization tool for TrueFusion.

At Siemens Healthineers, our purpose is to enable healthcare providers to increase value by empowering them on their journey towards expanding precision medicine, transforming care delivery, and improving patient experience, all enabled by digitalizing healthcare.

An estimated five million patients worldwide everyday benefit from our innovative technologies and services in the areas of diagnostic and therapeutic imaging, laboratory diagnostics and molecular medicine as well as digital health and enterprise services.

We're a leading medical technology company with over 120 years of experience and 18,500 patents globally. With over 50,000 employees in more than 70 countries, we'll continue to innovate and shape the future of healthcare.

Siemens Healthineers Headquarters

Siemens Healthcare GmbH
Henkestr. 127
91052 Erlangen, Germany
Phone: +49 9131 84-0
siemens-healthineers.com

Legal Manufacturer

Siemens Medical Solutions USA, Inc.
Ultrasound
22010 S.E. 51st Street
Issaquah, WA 98029, USA
Phone: 1-888-826-9702
siemens-healthineers.com/ultrasound