

# ACUSON P500 Ultrasound System

## Ultrasound

## Anytime, Anywhere

siemens-healthineers.com/p500

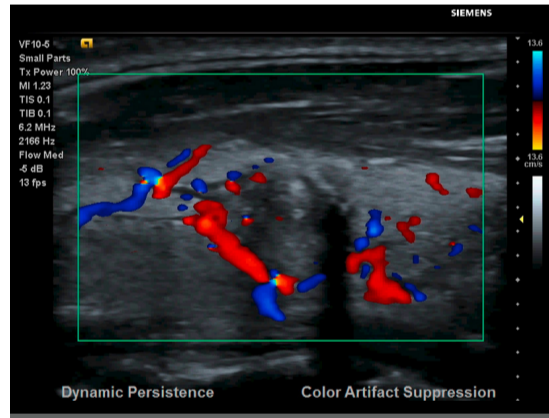
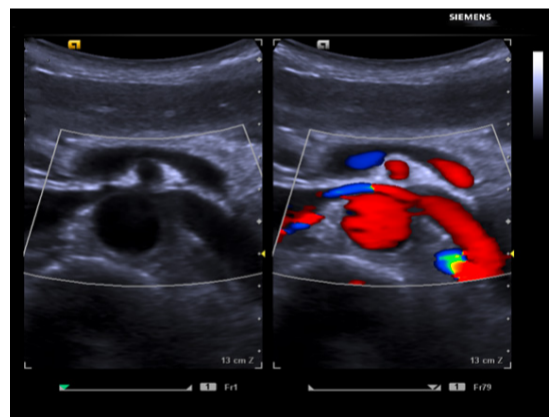


The ACUSON P500 is a portable system designed to equip clinicians with a powerful lineup of clinical applications right at the bedside.

Focused entirely on the user, the ACUSON P500 is your go-to platform to evaluate clinical manifestations, facilitate accurate diagnoses and assist during emergency and critical care procedures.

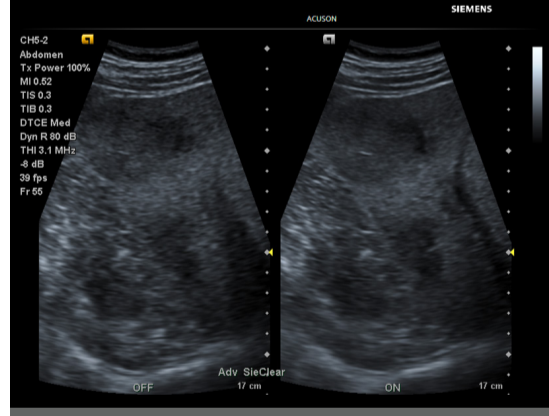


### See Better.



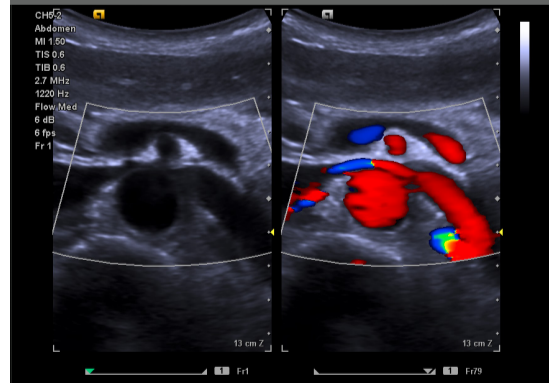
#### Motion correction technology

- Overcomes the challenges of motion artifacts
- Removes imaging challenges such as ghosting and color artifact
- Enhances anatomical detail and border delineation



#### High-performance imaging tools migrated from our premium ultrasound systems

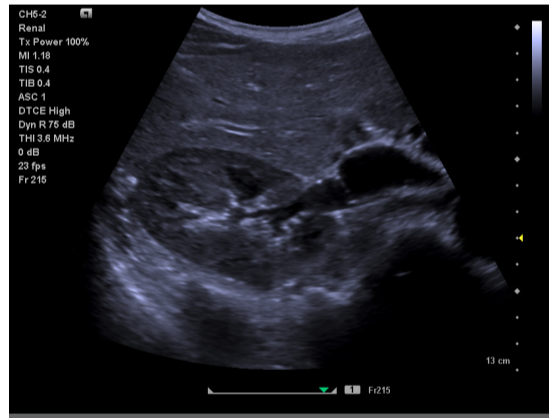
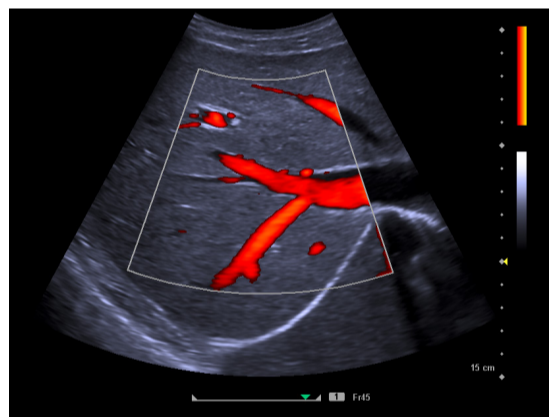
- Visualizes subtle tissue variations with Dynamic TCE™ tissue contrast enhancement technology
- Enhances anatomical detail and border detection with Advanced SieClear™ spatial compounding
- Optimizes images with one-button TEQ™ ultrasound technology



#### Real time Clarify™ vascular enhancement (VE) technology

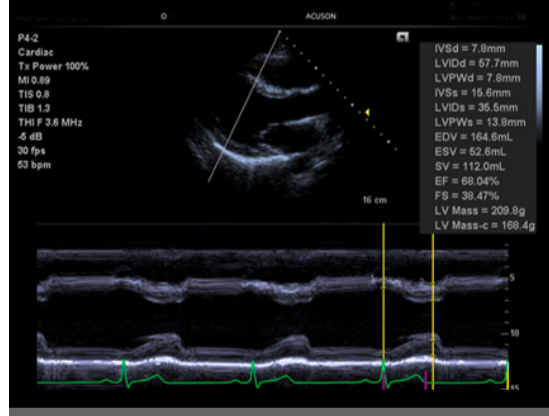
- Adapts pixel-by-pixel analysis through a simple, time-saving user interface
- Refines vascularity by reducing slice thickness and reverberation artifacts
- Supports all curved and linear transducers

### Scan Faster.



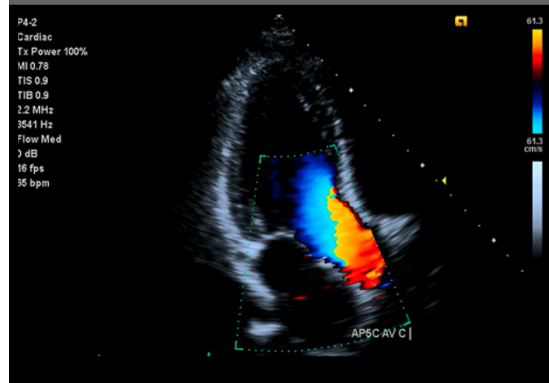
#### One touch image optimization

- TEQ technology
- 1-click 2D image optimization



#### eSie Measure™ workflow acceleration package

- Uses 1-click cardiac measurement for 2D, M-mode and Doppler
- Generates reliable measurement data for all modes
- Increases consistency, reproducibility and accuracy, while reducing key strokes



#### eSieScan™ workflow protocols

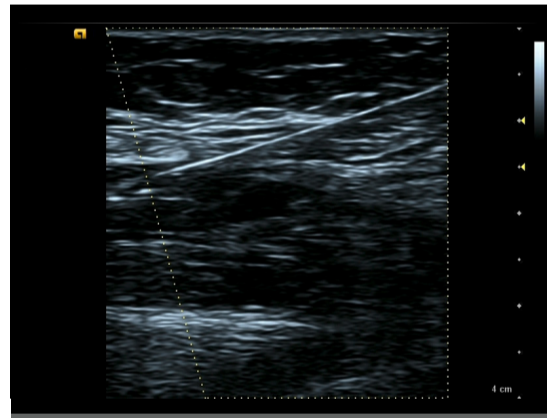
- Help anticipate and execute your exam based on customizable programs
- Reduce overall scanning time and thereby increase productivity



#### SieScape™ panoramic imaging

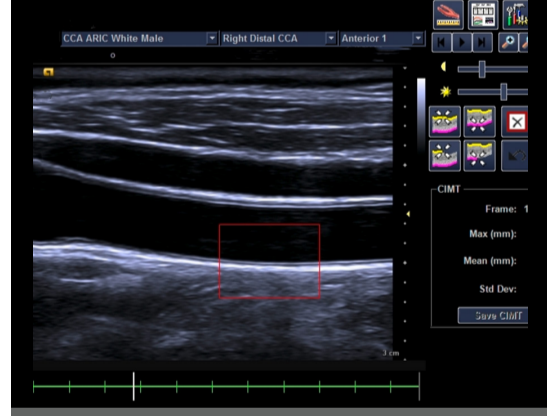
- Covers a wider area and provide valuable information in a single image
- Captures a large organ area in a single image

### Go Further.



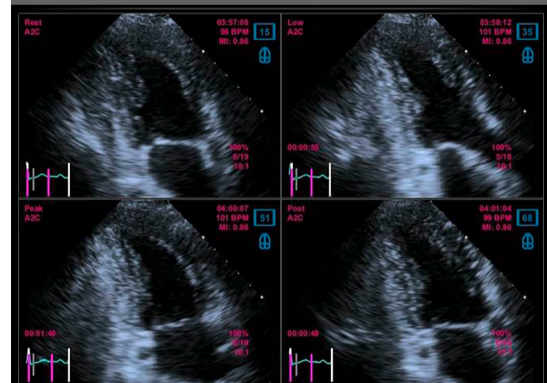
#### Needle visualization

- Delivers optimal needle visualization while maintaining image quality with the proprietary blending algorithm and speckle filters



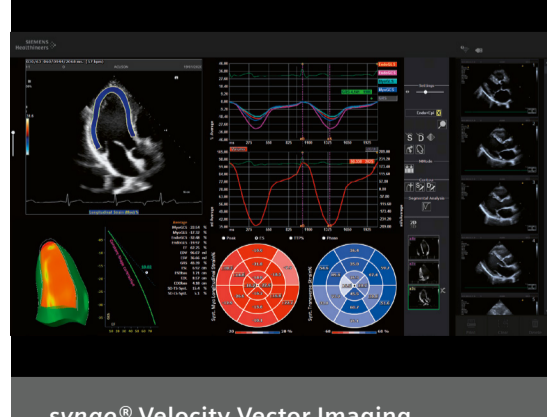
#### syngo® Arterial Health Package

- Communicates with patients about the relative state of their cardiovascular system



#### Stress Echo capabilities

- Facilitates ECG-triggered acquisition, display, selection, comparison, evaluation and archiving of multiple cardiac loops during various stages of a stress echo examination



#### syngo® Velocity Vector Imaging

- Non-invasive method to assess myocardial motion and mechanics
- Quantifies Global Longitudinal Strain (GRS) and Global Circumferential Strain (GCS) parameters
- Semi-automated chamber contouring for streamlined workflow