

ACUSON Origin Ultrasound System

# Visualizing vascular health

Harnessing the power  
of ultrasound imaging

Smart | Clear | Easy

[siemens-healthineers.com/ultrasound](http://siemens-healthineers.com/ultrasound)



**SIEMENS**  
Healthineers 

# Visualizing vascular health

Harnessing the power  
of ultrasound imaging

**Smart | Clear | Easy**

## **Smart auto enabled features**

---

ACUSON Origin by Siemens Healthineers enables imaging and acquisition with streamlined automation built into key functions utilized during a vascular exam.

**Auto Doppler:** Automated placement of Color Region of Interest (ROI), angle correction for Pulsed Wave Doppler, frequency, harmonics and depth adjustment in realtime while scanning.

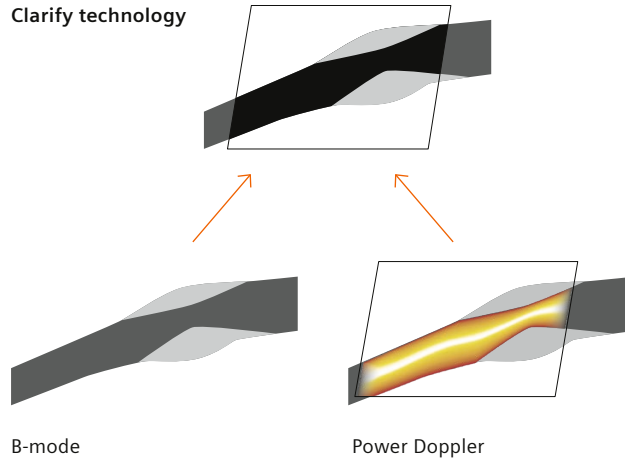
**Auto TEQ Doppler:** Optimizes Doppler settings automatically for gain, baseline, scale, and wall filter, minimizing operator adjustments.

**Auto IMT** (Intima Media Thickness): Helps establish risk profiles and classify patients with intermediate vascular disease by measuring two inner layers of the arterial wall.



---

Clarify technology



---

Remove artifacts and improve boundary detection in vessels.

## Clear advancements in imaging enhancements

Expanded tools and applications to improve diagnostic accuracy.

**InFocus Technology:** Uses synthesized, retrospectively focused transmit beams throughout the field of view for consistently sharp images across depths.

**AutoFlash Artifact Suppression Technology:** Reduces color flash artifacts without user interaction, enhancing color sensitivity and performance even during patient movement.

**UltraArt:** Real-Time Quad-Display allows users to select preferred image presentations via a touch-screen display, reducing speckle and enhancing contrast for realistic tissue presentation.

**Clarify™ Vascular Enhancement:** Vascular enhancement technology can optimize the image by enhancing the B-mode display with information derived from power Doppler, clearly differentiating vascular anatomy from acoustic artifacts and surrounding tissue.

## Easy operation and mobility

Redefining ergonomics for the broad spectrum of end users.

**Optimized User Interface:** Ensures intuitive navigation and ease of use for clinicians, enhancing overall user experience.

**Transducer Gesture Detection:** Double-tap to easily launch preset and activate transducers for specific exams.

**Ergonomically designed console:** Providing effortless access, reducing repetitive motion, and ensuring ease of use.

**Customizable workflows:** Optimize efficiency for doctors, sonographers, and patients. Achieve up to 40% reduced scan times with flexible workflow protocols<sup>1</sup>.

**Powerful and Portable:** Lighter<sup>2</sup>, smaller<sup>2</sup>, and easily maneuverable, making the system highly adaptable.

<sup>1</sup> The Impact of Improved Ultrasound Performance [White paper]. Circulated May 2018 from Siemens Medical Solutions USA, Inc.

<sup>2</sup> Compared to ACUSON SC2000

# Unlock the potential of ACUSON Origin

ACUSON Origin epitomizes innovation and excellence in vascular ultrasound technology. By integrating Smart, Clear, and Easy capabilities, this system empowers healthcare professionals with intelligent automation, unparalleled clarity, and effortless usability, revolutionizing the approach to vascular imaging.

Contact us today to learn more about how ACUSON Origin can redefine your cardiac diagnostic capabilities.



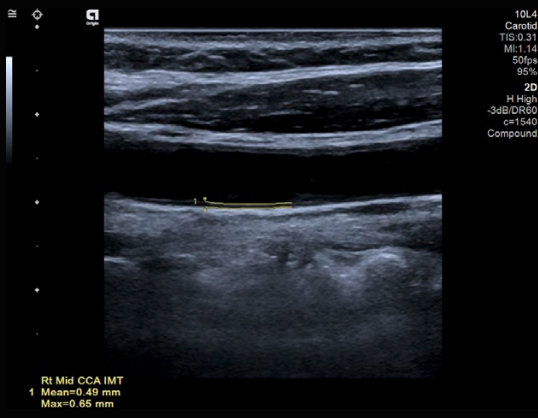
## Spotlight: vascular ultrasound

Global obesity incidence is on the rise. Linked to more than 60 chronic diseases<sup>1</sup> including several that directly affect cardiovascular health, vascular ultrasound is at the forefront in diagnosing and treating vascular disease.

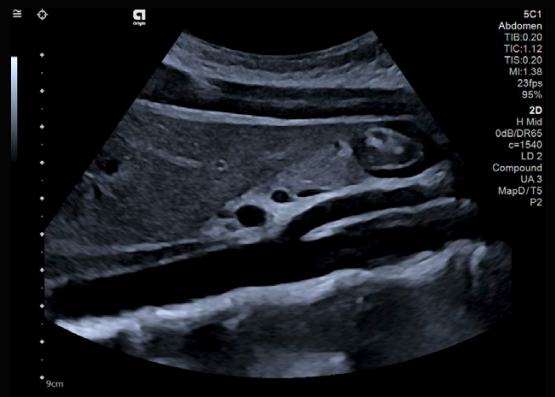
<sup>1</sup> [www.who.int/news-room/fact-sheets/detail/obesity-and-overweight](http://www.who.int/news-room/fact-sheets/detail/obesity-and-overweight)



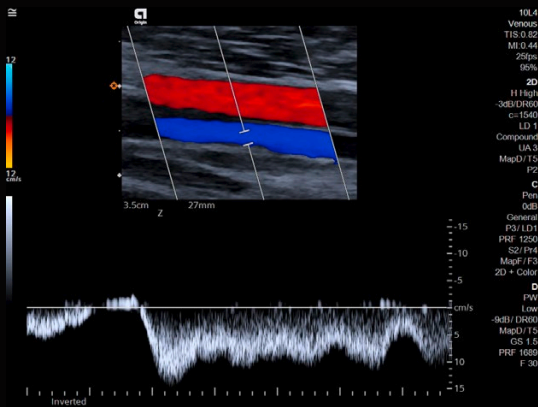




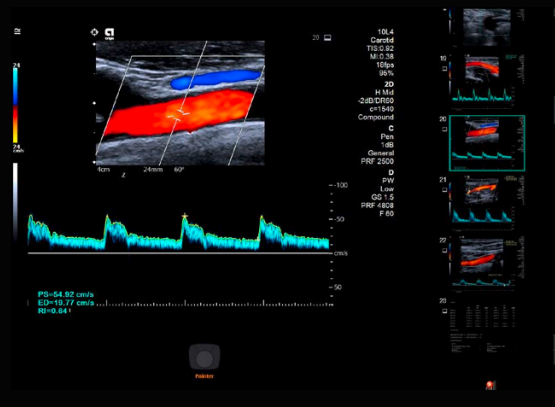
**Auto IMT** Automatically locates and measures the thickness of the two inner layers of the carotid artery, the tunica intima and the tunica media. This technology will help to establish risk profiles, and to classify patients with intermediate vascular disease.



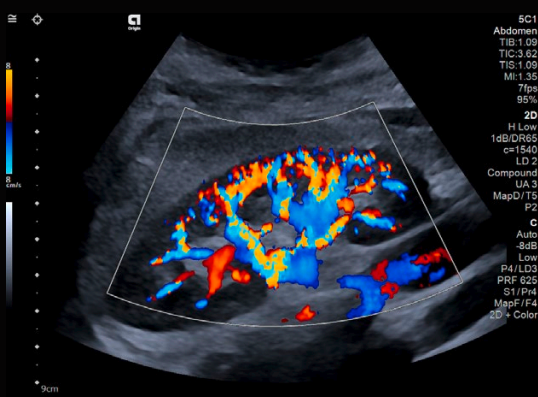
**InFocus imaging:** Experience superior vascular imaging with unparalleled clarity



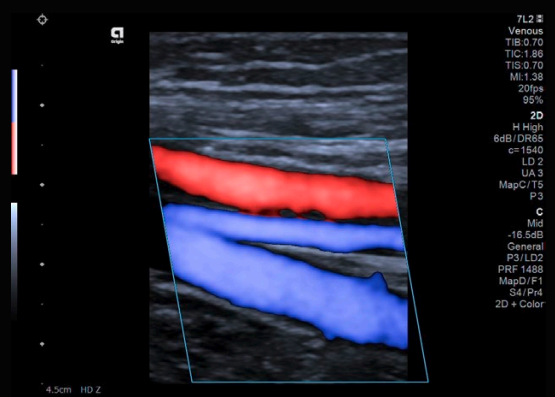
**Auto Doppler** automatically steer and position the color box and PW gate to help reduce carotid exam time and over 25% of keystrokes.



**Auto TEQ** automatically optimize relevant Doppler parameters immediately upon freeze for improved spectral analysis and workflow accuracy and treatment planning.



**Auto Flash Artifact Suppression Technology** uses smart algorithms to automatically reduce flash artifact experienced from motion for improved color sensitivity and performance contrast for enhanced diagnostic efficiency.



**Directional Power** not only improves sensitivity, but also provides flow direction which is important when evaluating flow. Directional Power can be an excellent tool when evaluating very small vessels or stenotic changes in flow.

The information in this document contains general technical descriptions of specifications and options as well as standard and optional features, which do not always have to be present in individual cases.

Siemens Healthineers reserves the right to modify the design, packaging, specifications, and options described herein without prior notice. For the most current information, please contact your local sales representative from Siemens Healthineers.

Note: Any technical data contained in this document may vary within defined tolerances. Original images always lose a certain amount of detail when reproduced.

The products/features mentioned in this document may not be commercially available in all countries. Due to regulatory reasons their future availability cannot be guaranteed. Please contact your local Siemens Healthineers organization for further details. Standalone clinical images may have been cropped to better visualize pathology.

ACUSON Origin and Clarify are trademarks of Siemens Medical Solutions, USA, Inc.

At Siemens Healthineers, we pioneer breakthroughs in healthcare. For everyone. Everywhere. Sustainably. As a leader in medical technology, we want to advance a world in which breakthroughs in healthcare create new possibilities with a minimal impact on our planet. By consistently bringing innovations to the market, we enable healthcare professionals to innovate personalized care, achieve operational excellence, and transform the system of care.

Our portfolio, spanning in vitro and in vivo diagnostics to image-guided therapy and cancer care, is crucial for clinical decision-making and treatment pathways. With the unique combination of our strengths in patient twinning<sup>1</sup>, precision therapy, as well as digital, data, and artificial intelligence (AI), we are well positioned to take on the greatest challenges in healthcare. We will continue to build on these strengths to help overcome the world's most threatening diseases, enable efficient operations, and expand access to care.

We are a team of more than 71,000 Healthineers in over 70 countries passionately pushing the boundaries of what is possible in healthcare to help improve the lives of people around the world.

<sup>1</sup> Personalization of diagnosis, therapy selection and monitoring, after care and managing health.

---

**Siemens Healthineers Headquarters**

Siemens Healthineers AG  
Siemensstr. 3  
91301 Forchheim, Germany  
Phone: +49 9191 18-0  
siemens-healthineers.com

**Manufacturer**

Siemens Medical Solutions USA, Inc.  
Ultrasound  
22010 S.E. 51st Street  
Issaquah, WA 98029, USA  
Phone: 1-888-826-9702  
siemens-healthineers.com/ultrasound